

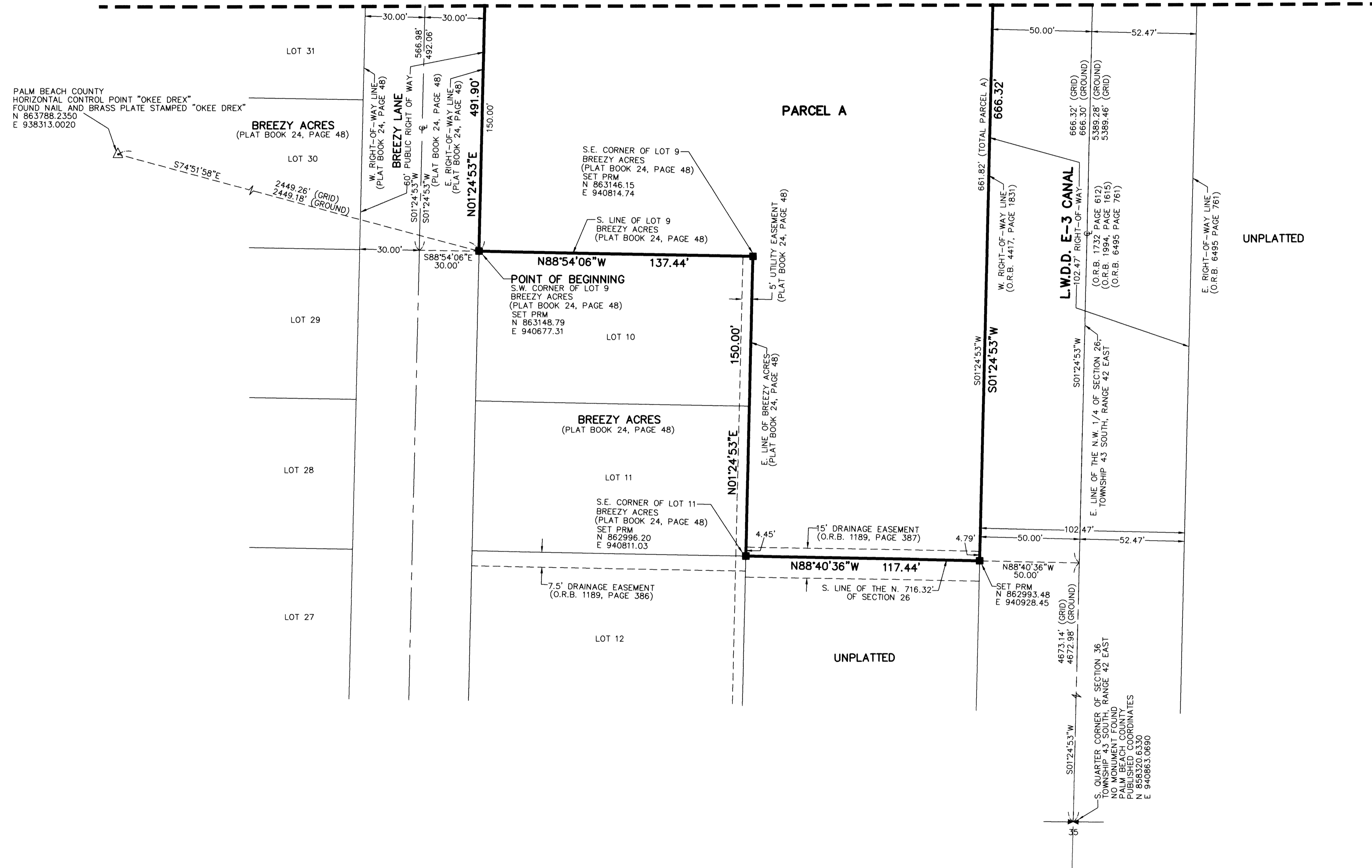
THIS INSTRUMENT PREPARED BY
 DAVID P. LINDLEY
 OF
CAULFIELD and WHEELER, INC.
 SURVEYORS - ENGINEERS - PLANNERS
 7900 GLADES ROAD, SUITE 100
 BOCA RATON, FLORIDA 33434 - (561)392-1991
 CERTIFICATE OF AUTHORIZATION NO. LB3591

LUXURY VEHICLES OF WEST PALM BEACH

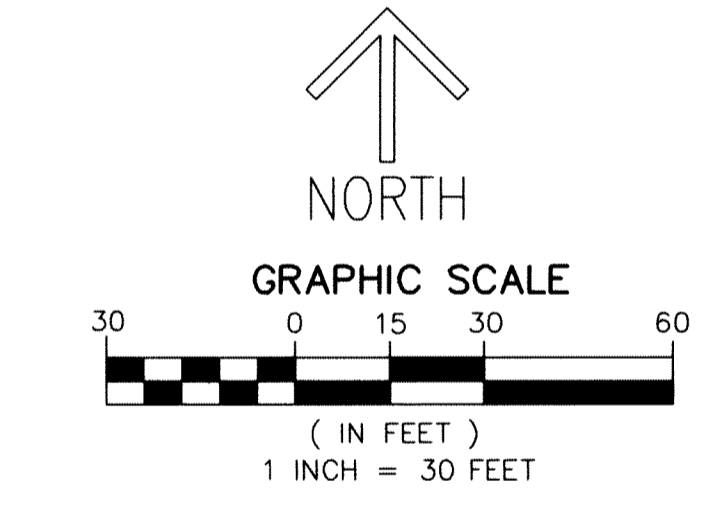
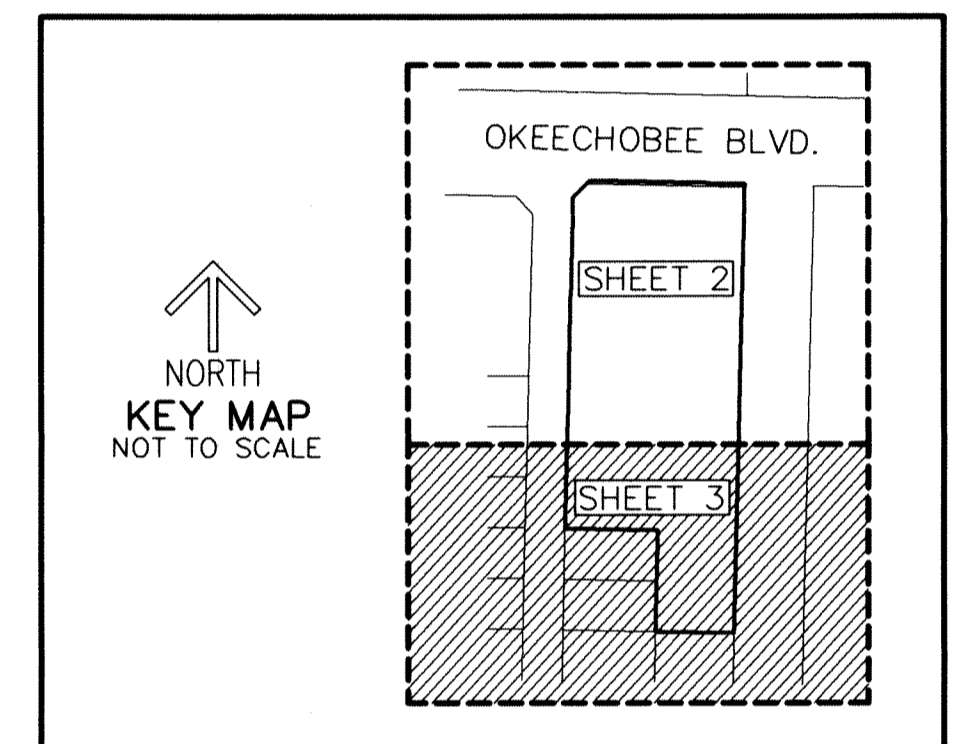
BEING A REPLAT OF LOTS 3 THROUGH 9, BREEZY ACRES,
 AS RECORDED IN PLAT BOOK 24 PAGE 48 OF THE PUBLIC RECORDS OF PALM BEACH COUNTY, FLORIDA,
 TOGETHER WITH A PORTION OF SECTION 26, TOWNSHIP 43 SOUTH, RANGE 42 EAST, PALM BEACH COUNTY, FLORIDA

17

MATCH LINE SHEET 2



SHEET 3 OF 3



NOTES
COORDINATES, BEARINGS AND DISTANCES
 COORDINATES SHOWN ARE GRID
 DATUM = NAD 83 (1990 ADJUSTMENT)
 ZONE = FLORIDA EAST
 LINEAR UNIT = US SURVEY FEET
 COORDINATE SYSTEM 1983 STATE PLANE
 TRANSVERSE MERCATOR PROJECTION
 ALL DISTANCES ARE GROUND UNLESS OTHERWISE NOTED
 SCALE FACTOR = 1.0000342
 GROUND DISTANCE X SCALE FACTOR = GRID DISTANCE
 BEARINGS AS SHOWN HEREON ARE GRID DATUM,
 NAD 83 (1990 ADJUSTMENT), FLORIDA EAST ZONE.

LEGEND/ABBREVIATIONS
 C - CENTERLINE
 E - EASTING (WHEN USED WITH COORDINATES)
 F.D.O.T. - FLORIDA DEPARTMENT OF TRANSPORTATION
 FPL - FLORIDA POWER & LIGHT COMPANY
 LB - LICENSED BUSINESS
 L.W.D.D. - LAKE WORTH DRAINAGE DISTRICT
 N - NORTHING (WHEN USED WITH COORDINATES)
 O.R.B. - OFFICIAL RECORD BOOK
 UE - UTILITY EASEMENT
 PRM - DENOTES PERMANENT REFERENCE MONUMENT
 4" x 4" x 24" CONCRETE MONUMENT WITH
 ALUMINUM DISK STAMPED "C&W PRM LB3591"
 SIRC - DENOTES SET 5/8" IRON ROD WITH CAP
 STAMPED "C&W LB#3591"
 Δ - DENOTES HORIZONTAL CONTROL POINT